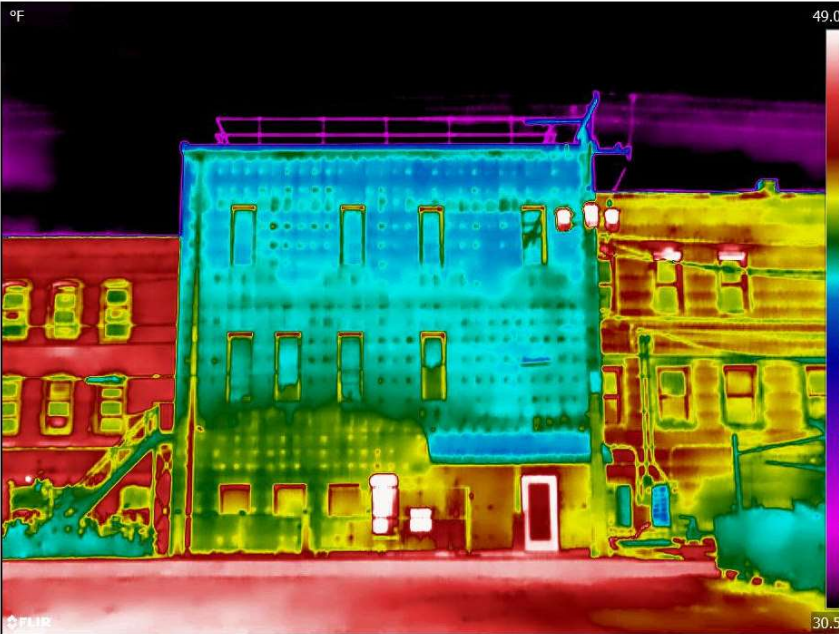


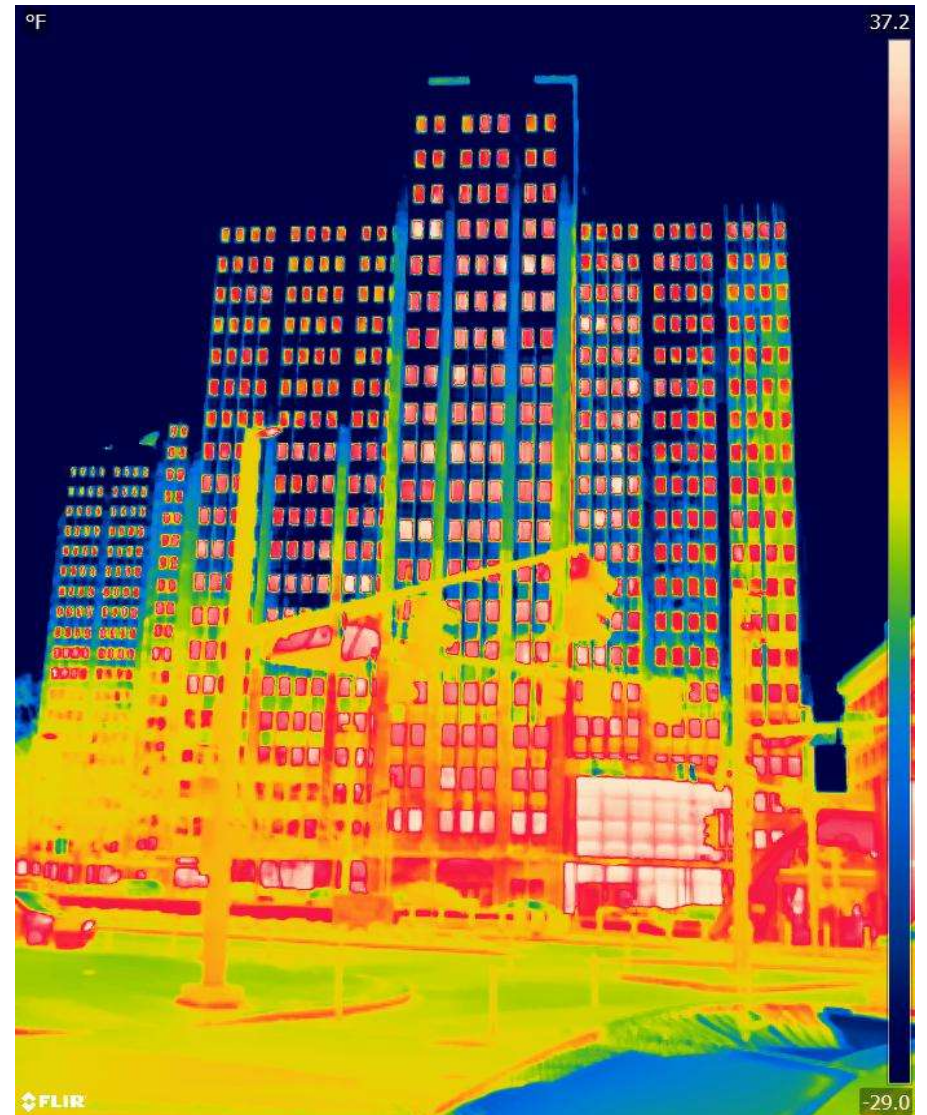
Infrared Thermography: Seeing Stunning, Significant Secrets



Six and Kane, EnerPHit, Kane, PA: front elevation



Six and Kane, EnerPHit, Kane, PA: rear elevation



© Building Performance Architecture

February 2023

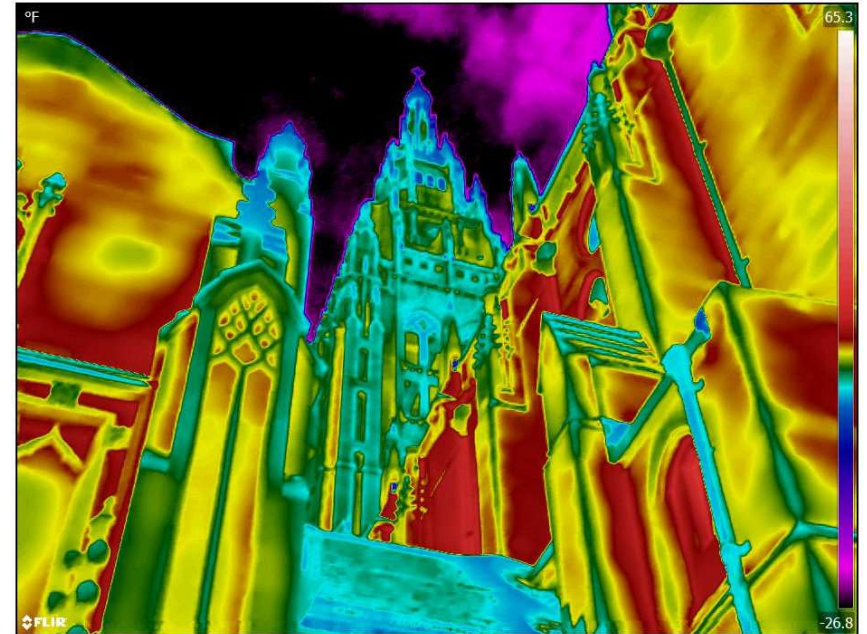
www.buildperformarch.com

Interpreting IR Images:

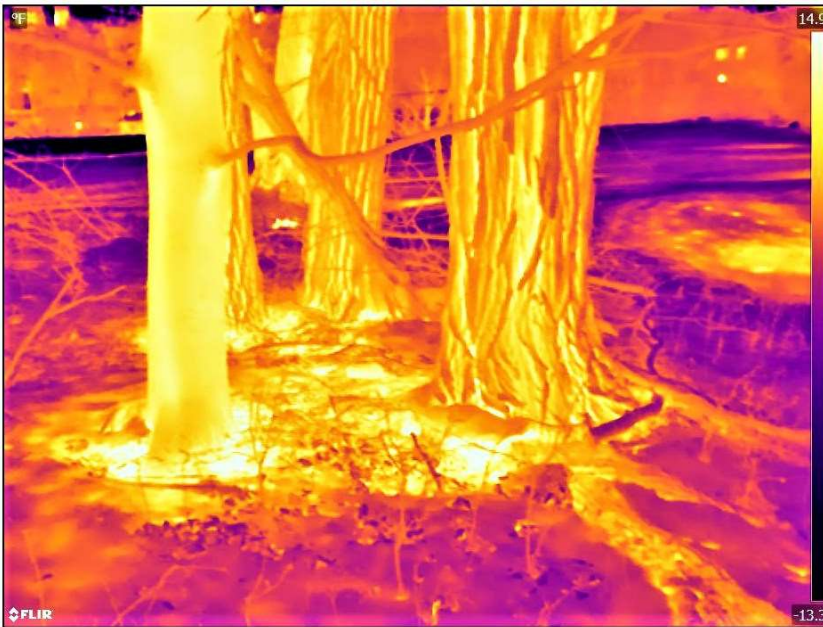
- Every pixel in the image represents an apparent temperature, using a color from a selected palette.
- Note the temperature scale at the right edge of each image. The bottom number and corresponding color on the scale represent the lowest temperature (in °F) on the scale.
- The top number and corresponding color on the scale represent the highest temperature (in °F) on the scale.

Write info@buildperformarch for more info and our slideshow.

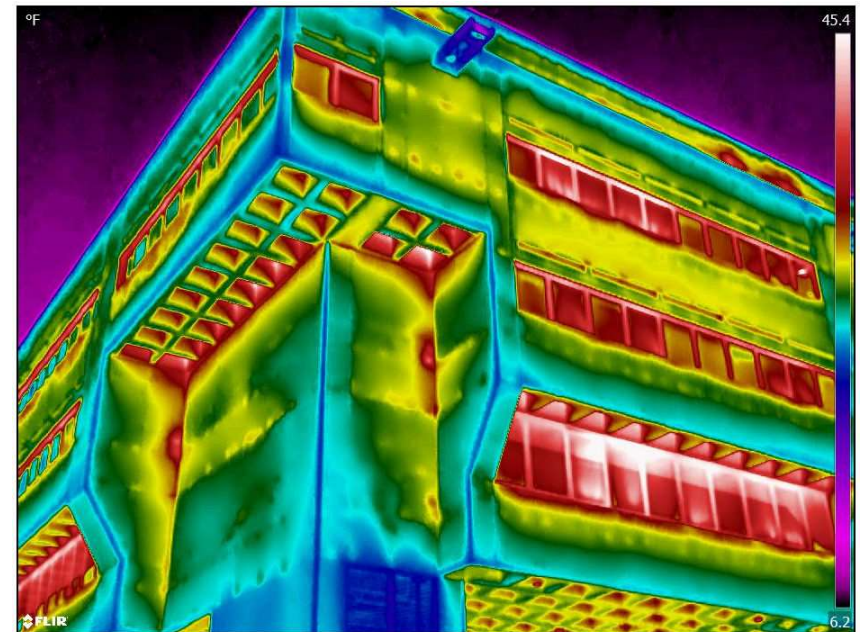
Cover Photo: Gateway Towers, Pittsburgh, PA



East Liberty Presbyterian Church, Pittsburgh, PA



Trees are living creatures, winter, Penn Hills, PA



Posvar Hall, University of Pittsburgh, Pittsburgh, PA